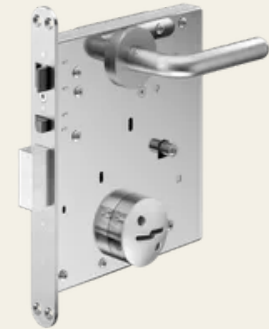


HSL double bit deadbolt/slam lock with additional handle strike plate (with interchangeable mechanism)

Article No.: HSL 106

The HSL 106 model is designed for office and passage doors. The deadbolt is locked and unlocked by turning the key 180 degrees. The handle has no function when the deadbolt is locked. The key can be removed whether the door is locked or unlocked.



Properties

- Push-button function for administrative doors
- Simple operation with HSL double bit key (1-turn)
- Keyed to different without a master key

Functional description

Insert the HSL double-bit key into the lock. Use the key to lock the deadbolt by turning it one full turn (180°). The door can be opened by pressing the handle. The door is closed. The deadbolt is pre-locked with the key by turning it one full turn (180°). The door is fully locked; the handle is inoperable. Changing the locking system The locking mechanism can be switched to a different locking system while unlocked (deadbolt re-locked). This requires a key for the current locking system and a key for the future locking system.

Places of use

- Passage door
- Technical room
- Sanitary room
- Service door

Technical specifications



Technical specifications

Material	Stainless steel
Surface	Matt
Nut [mm]	9
Face plate dimension [mm]	280 x 30 x 4
Material forend	Stainless steel
Material deadbolt	Stainless steel
Material lock housing	Stainless steel
Lock mechanism	HSL double bit
Levers	7
Recodability	yes
Weight [kg]	3.3
Lock dimensions [mm]	200 x 22 x 220
Closing operations	500,000
Max. lateral bolt load capacity [kN]	50
Relative humidity [%]	95% non-condensing
bolt throw mm	20
external visual indicator	mechanically
Latch clearance [mm]	14