

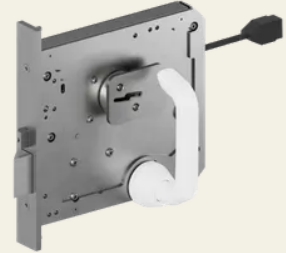
## HSL double bit retrofit electromechanical (hybrid) high-security lock – comparable to CHUBB® model 3R63

Article No.: HSL C103

---

### Properties

- Mechanical locking system tested with at least 500,000 inserts
- Handle mechanism tested with at least 500,000 bolt movements
- Solenoid unit tested with at least 1,000,000 cycles
- Solenoid designed for operation at +/- 10% of 24 V DC regulated supply
- Nominal current consumption: 250 mA
- Axial load on the deadbolt: 12.5 kN
- Side load on the deadbolt: 50 kN
- External handle/knob designed as a predetermined breaking point to protect the internal lock mechanism from overload
- Lock available in left-hand or right-hand versions for inward or outward opening doors
- Can be used for passage doors or detention room doors
- Can be installed in steel or wooden doors



### Functional description

The HSL C103 is a mortise lock made of stainless steel. Secure locking is achieved by two independent methods: Electric mode – unlocking by a 24V DC control signal from an external source. The deadbolt is retracted via the handle or knob (on one or both sides) when a 24V signal is applied. The lock is activated by simply closing the door.

Key mode – The deadbolt is retracted via the handle or knob (on one or both sides) when the key is inserted. The key cannot be removed while the deadbolt is retracted. The door is also locked by closing it; the deadbolt is secured by the additional deadbolt. The key function can be implemented on one or both sides.

Revision/recoding key – Turning the revision/recoding key in the locking direction deactivates the electronic system and the standard key.

## Technical specifications

Surface	dull
Insert	Rotary knob, L- or T-handle
Assembly	Can be installed in steel or wooden doors
Temperature range	-40° to +65°
Face plate dimension [mm]	285 x 30 x 4 mm
Bar gauge	25 x 22 x 45 mm
Material forend	Stainless steel
Material deadbolt	Stainless steel
Material lock housing	Stainless steel
Lock mechanism	HSL double bit
Levers	7
Recodability	Yes, 9 times
Weight [kg]	4,4 Kg
Closing operations	Mechanical locking system tested with at least 500,000 operations
Max. lateral bolt load capacity [kN]	50 kN
Operating voltage	24 V DC
Dimensions LxWxH	229 x 29 x 205 mm
bolt throw mm	25 mm

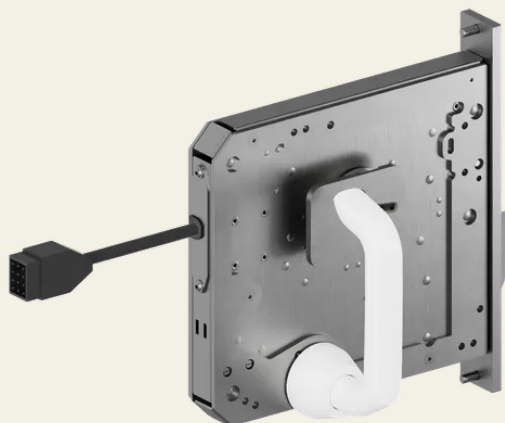
## Technical specifications

**SECURITY  
MADE IN GERMANY  
SINCE 1883**



Door version

right-hand version or left-hand version



**SECURITY**  
**MADE IN GERMANY**  
**SINCE 1883**

