

## PYLOCX locking and switching device (VdS)

Article No.: PL3015-SE/SB-V44

---

Locking and switching device for connecting PYLOCX systems to EMA/EMZ systems. Available with or without surface protection.



### Functional description

After entering the code, the PYKEY is placed on the corresponding contact point on the device. The code is transmitted in encrypted form and the device opens. When powered, automatic keying is possible via a door bolt contact. EMA and EMZ systems can thus be integrated into a PYLOCX system in accordance with VdS.

### Technical specifications

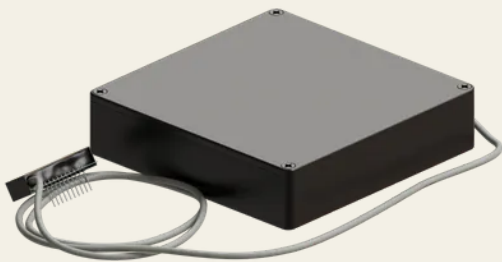
Material	Aluminium
Surface	Rough
Colour	Black
Standards	VdS 2.344:2.014-07, VdS 2.110:2.017-09, VdS 2.203:2.001-03, VdS 2.119:2.003-12, VdS
Fixing type	2.271:2.007-12 Screw-on
IP-Rating	IP32
Feature	With or without surface protection
Temperature range	-25°C to +50°C
Locking function	Electronic

## Technical specifications

Locking set	PYKEY
Lock type	Manual keyed, automatic locking
Use	Switching device for EMA, EMZ
Security class	For EMA, EMZ Class C
Operating voltage	12V DC via connected EMA, EMZ
Dimensions LxWxH	120 x 120 x 30 mm



**SECURITY**  
**MADE IN GERMANY**  
**SINCE 1883**



**| SECURITY  
MADE IN GERMANY  
SINCE 1883**

