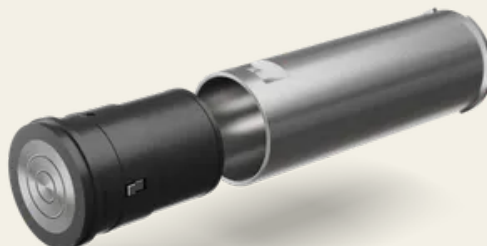


PYLOCX key depot - VdS - incl. locking mechanism - inside diameter 61.5 mm

Article No.: PL401X

The PL4011-SB tubular safe can be installed in almost any wall by drilling a core hole and offers space for keys, cash, credit cards or other valuables. Different cylinder lengths available.



Properties

- PYLOCX key depot in standard design
- Dimensions of locking mechanism: L 88.3mm Ø 61mm
- PYLOCX cylinder length 185mm or 255mm
- Flush assembly through core drilling
- Installation in free-standing columns and hollow walls possible
- Temperature range -35°C - + 60°C
- Currentless operation
- Opening by one-time code or fixed PIN
- Readable opening protocol up to 10,000 entries
- VdS certified
- Suitable for indoor and outdoor use with IP63
- Optional accessories: PL4019 key cup, PL4011SBÖ key eyelet, PL4011-LB light switch cover

Functional description

After entering the code, the PYKEY® is placed on the contact point of the device. The code is transmitted and the device is supplied with power for opening. The locking insert can be pulled out manually using the magnetic force of the PYKEY®. When the locking insert is pushed back in, it locks automatically.

Technical data

Technical data

Material	Aluminium
Surface	Hard anodised
Colour	Grey
Dimensions LxWxH	L 88.3mm Ø 61mm
Standards	VdS 2.105:2.013-10VdS 2.110:2.017-09VdS 2.344:2.014-07DIN 14.675 Annex C:2.003-11
IP-Rating	In metal cylinder: IP63 / Individually: IP53
Temperature range	-35°C - +60°C
Locking function	Electronic
Locking set	PYKEY
Locking type	Automatic deadlocking
Weight [kg]	450g
Utilisation	Electronic tube safe
Safety class	VdS class SD1Environmental class IV
WebGL	https://api.sts.sch-server.de/sync/renderings/PYLOCX
Dimensions [mm]	Rohrtresor/Stuv_Tresorschloss_01.glb L=88.3 x Ø 61

**SECURITY
MADE IN GERMANY
SINCE 1883**



**SECURITY
MADE IN GERMANY
SINCE 1883**

