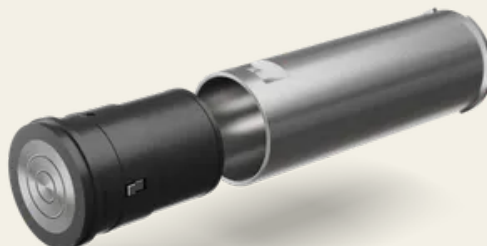


PYLOCX Retrofit lock insert for IKON key safe/key deposit box

Article No.: PL402X

The PL4021-SB tube safe can be installed in almost any wall using core drilling and offers space for keys, cash, credit cards or other valuables. The lock insert is compatible with IKON wall safe tubes.



Properties

- PYLOCX key safe in alternative version
- Dimensions of lock insert: L 77 mm Ø 64.3 mm
- Compatible with IKON wall safe tubes
- PYLOCX cylinder length 275 mm
- Flush mounting by core drilling
- Can be installed in free-standing columns and hollow walls
- Temperature range -35°C to + 60°C
- Powerless operation
- Opening with one-time code or fixed PIN
- Readable opening log with up to 10,000 entries
- VdS certified
- Suitable for indoor and outdoor use thanks to IP63
- Optional accessories: PL4021SBÖ key eyelet, PL4011-LB light switch cover

Functional description

After entering the code, the PYKEY is placed on the contact point of the device. The code is transmitted and the device is supplied with power to open. The lock insert can be pulled out manually using the magnetic force of the PYKEY. When the lock insert is pushed back in, it locks automatically.

Technical specifications

Technical specifications

| | |
|-------------------|---|
| Material | Aluminium |
| Surface | Hard anodised |
| Colour | Grey |
| Standards | VdS 2.105:2.013-10 / VdS 2.110:2.017-09 / VdS 2.344:2.014-07 / DIN 14.675 Annex |
| IP-Rating | C:2.003-11 In metal cylinder: IP63 / Single: IP53 |
| Temperature range | -35°C to +60°C |
| Locking function | Electronic |
| Locking set | PYKEY |
| Lock type | Automatic deadlocking |
| Weight [kg] | 450g |
| Use | Electronic tube safe |
| Security class | VdS Class SD1 Environmental Class IV |
| Dimensions LxWxH | L 77 mm Ø 64.3 mm |

**SECURITY
MADE IN GERMANY
SINCE 1883**



**SECURITY
MADE IN GERMANY
SINCE 1883**



**SECURITY
MADE IN GERMANY
SINCE 1883**

