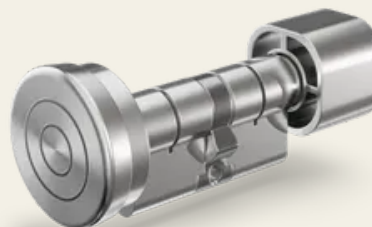


PYLOCX Compact Euro profile knob cylinder

Article No.: PL61XX

The PYLOCX Compact Euro profile knob cylinder, available in sizes 30 mm internal / 30 mm external to 60 mm internal / 60 mm external (in 5 mm increments). Optionally available with a 7.2 mm extension.



Properties

- 30 mm inside / 30 mm outside up to 60 mm inside / 60 mm outside
- Optionally available with extension
- Cylinder lock with Euro profile
- Temperature range -40°C to + 60°C
- Power-free operation
- Opening via one-time code or fixed PIN
- Readable opening log with up to 10,000 entries
- VdS certified
- Suitable for indoor and outdoor use thanks to IP68

Functional description

After entering the code, the PYKEY is placed on the contact point of the device. The code is transmitted and the device is supplied with power to open. After pulling out the knob, it can be turned to open. When closed, the outer knob turns freely.

Technical specifications

Material	Brass
Surface	Nickel-plated

Technical specifications

Colour	Silver
Fixing type	For mortise locks with Euro profile cylinder plug-in unit
IP-Rating	IP68
Feature	Optional with 7.2 mm extension
Temperature range	-40°C to +60°C
Locking function	Electronic
Locking set	PYKEY
Lock type	Manual keyed
Use	Euro profile knob cylinder
Door thickness [mm]	Knob side (inside): 30–60 mm, contact point side (outside): 30–60 mm

