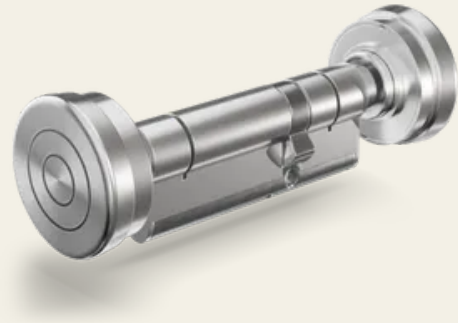


## PYLOCX Compact Euro profile double cylinder

Article No.: PL62XX

---

The PYLOCX Compact Euro Profile double cylinder is available in sizes ranging from 30 mm (internal) / 30 mm (external) to 60 mm (internal) / 60 mm (external) (in 5 mm increments). An optional 7.2 mm extension is available. Custom lengths exceeding 60 mm are available upon request.



### Properties

- 30 mm (internal) / 30 mm (external) up to 60 mm (internal) / 60 mm (external)
- Optional extension
- Cylinder lock with Euro Profile
- Temperature range: -40°C to +60°C
- Battery-free operation
- Unlocking via one-time code or fixed PIN
- Readable access log with over 3,000 entries
- Suitable for indoor and outdoor use thanks to IP68 rating

### Functional description

After entering the code, the PYKEY<sup>®</sup> is placed on the device's contact point. The code is transmitted, and power is supplied to the device to open it. Once the knob is pulled out, it can be turned to open the door. When closed, the exterior knob turns freely.

### Places of use

- Der Doppelzylinder eignet sich für Türen mit Euro-Profilzylinder in technischen oder sicherheitsrelevanten Bereichen wie Infrastruktur-, Technik- oder Versorgungsanlagen. Dank Möglichkeit des Einmalcode-Zugang und Protokollfunktion eignet sich das System besonders für Anwendungen mit wechselnden Zutrittsberechtigungen oder erhöhten Sicherheitsanforderungen..

### Technical specifications



## Technical specifications

Material	Brass and stainless steel
Surface	Nickel-plated
Colour	Silver
Fixing type	For mortise locks with a Euro-profile cylinder plug-in unit
IP-Rating	IP68
Feature	Optional with a 7.2 mm extension for doors with security hardware
Temperature range	-40°F to +60°F
Locking function	Electronically
Locking set	PYKEY
Lock type	Manual closure
Door type	Interior doors and utility doors
Use	Euro-profile double cylinder
Door thickness [mm]	Contact side (inside): 30–60 mm, Contact side (outside): 30–60 mm