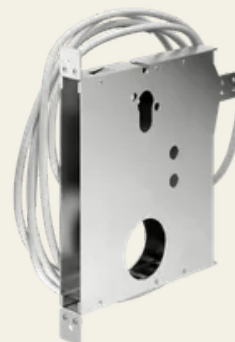


Lock box for mechanical/electrical HSL/SL locks

Article No.: ST 300

Stainless steel lock box for mechanical and electronic
HSL / SL locks of the 100 series



Properties

- For mechanical, mechatronic and electronic HSL high-security locks
- For mechanical, mechatronic and electronic SL security locks
- Made entirely of stainless steel
- Standard version with 5 metre LiYY 16 x 0.34 cable
- Cable diameter 8.7 mm, min. bending radius 130.5 mm
- For welding

Functional description

The door manufacturer receives the lock box directly from STUV and welds it into the door leaf. This simplifies the installation and removal of the locks on the construction site or for replacement purposes. In addition, the locks are correctly aligned in the door leaf. STUV offers a suitable lock box for almost all lock types. Only BGH locks with bar locking are installed without a box.