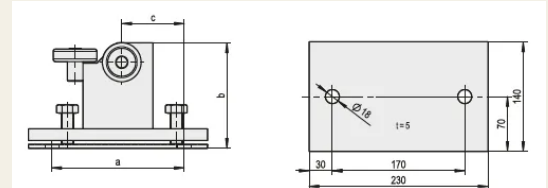


## Rolling mechanism for cantilever gates

Article No.: TÛ2700

The roller assemblies are used in combination with the profile rails.



### Properties

- Steel, zinc-plated and chromated.
- Steel rollers with waterproof and shock-proof ball bearings
- Counterplate hot-dip galvanised
- With heavy-duty dowels/HKD M16 impact anchors

### Functional description

The rolling devices are available in various sizes.

