

## Stainless steel rain protection rosette

Article No.: TÛ750

The rain protection rosettes are commonly used for insert parts on doors that are exposed to the weather.

### Properties

— Height 15mm



### Functional description

The bezel is made of stainless steel with a spring-loaded flap. This can be doubled up with a shim provided for this purpose.

### Technical data

Material	Stainless steel
Surface	Matt
Colour	Silver
Dimensions LxWxH	15x30x78
Fixing type	M6
Dimensions [mm]	15 x 30 x 78

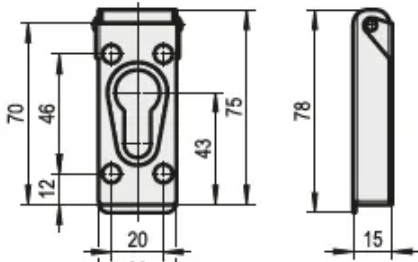


Abb. / Fig.: 1  
Außenseite / Outside

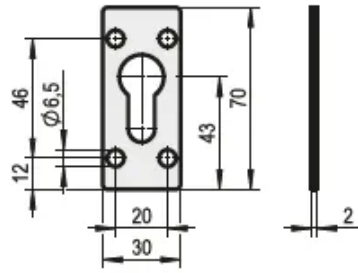


Abb. / Fig.: 2  
Innenseite / Inside