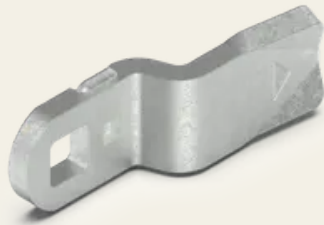




Zinc-plated steel cam with 8 mm offset

Article No.: V02005450

The cam serves as height adjustment for a corresponding quarter turn of your choice and can thus compensate for differences between the housing frame and the locking flap. The cams are available in neutral, positive and negative versions, depending on the installation location.



Technical specifications

Material	Steel
Surface	Zinc-plated
Colour	Silver
Feature	With stopper
Length of housing [mm]	18
Offset [mm]	8
Cam [mm]	45

**SECURITY
MADE IN GERMANY
SINCE 1883**

