

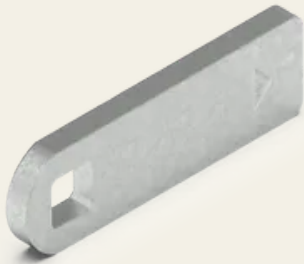


**Zinc-plated steel cam for Mammut quarter turn,
non-offset**

Article No.: V02067000

The cam serves as a height adjustment for a corresponding quarter turn of your choice and can thus compensate for differences between the housing frame and the locking flap. The cams are available in neutral, positive and negative offset versions, depending on the installation location.

This special type of cam is suitable for our popular MAMMUT compression latch.



Technical specifications

Material	Steel
Surface	Zinc-plated
Colour	Silver
Feature	Suitable for Mammut compression twist locks
Length of housing [mm]	18
Offset [mm]	0
Cam [mm]	45

**SECURITY
MADE IN GERMANY
SINCE 1883**

