

Lock insert, double bit 3 mm

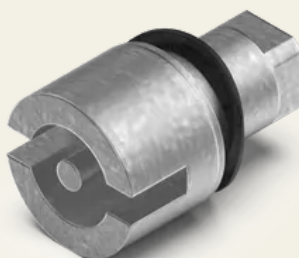
Article No.: V02211010

The lock insert, together with the insert, forms the central unit of the quarter turn. We offer a wide range of lock inserts – from standard inserts for general use to very unusual inserts that meet the highest security requirements.



Technical specifications

Material	Zinc die
Surface	Powder-coated
Colour	Black
Insert	Double bit with 3 mm pin



| **SECURITY**
| **MADE IN GERMANY**
| **SINCE 1883**

