

Lock insert, square 6 mm and IP65

Article No.: V02411140

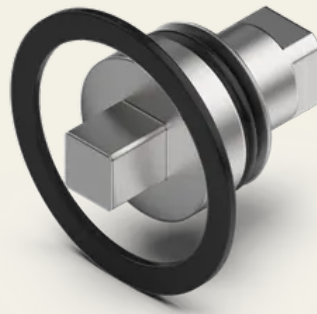
The lock insert forms the central unit of the quarter turn in conjunction with the actuating element. We offer you many different lock inserts - from standard inserts, which are widely used, to very unusual inserts that fulfil the highest security requirements.



Technical data

Material	Stainless steel
Colour	Neutral
Insert	Square 6mm
Standards	IP65
WebGL	https://api.sts.sch-server.de/sync/renderings/02.411.140/webGL/02.411.140.gltf

**SECURITY
MADE IN GERMANY
SINCE 1883**



**SECURITY
MADE IN GERMANY
SINCE 1883**

