

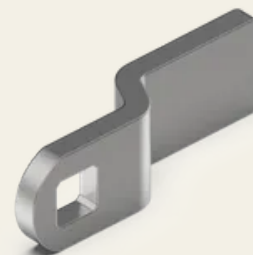


Stainless steel cam for Mammut quarter turn with 8 mm offset

Article No.: V02467080

Technical data

Material	Stainless steel
Colour	Neutral
Length of housing	18 mm
Offset	8 mm
Door version	Right-hand version / left-hand version
Cam	45 mm
Feature	Suitable for Mammut compression twist locks
WebGL	https://api.sts.sch-server.de/sync/renderings/02.467.080/webGL/02.467.080.gltf
Length of housing [mm]	18
Offset [mm]	8
Cam [mm]	45



SECURITY
MADE IN GERMANY
SINCE 1883

