

Lock insert, slot

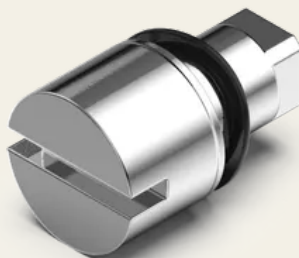
Article No.: V02610110

The lock insert, together with the insert, forms the central unit of the quarter turn. We offer a wide range of lock inserts – from standard inserts for general use to very unusual inserts that meet the highest security requirements.



Technical specifications

Material	Zinc die
Surface	Chrome-plated
Colour	Silver
Insert	Slot



**SECURITY
MADE IN GERMANY
SINCE 1883**

