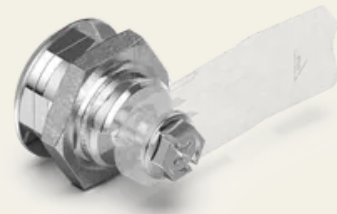


Zamak rotary bolt housing with Ø 28 mm

Article No.: V02960000

The quarter-turn lock housing holds the lock insert and, in combination with the cam, forms the actual quarter-turn lock, which is finally equipped with a cam tailored to the specific application. As with the cams and insert parts, there are various housing diameters available – from more prominent and solid designs to inconspicuous and more delicate models.



Technical specifications

Material	Zinc die
Surface	Chrome-plated
Colour	Silver
Installation opening [mm]	Ø 20.2 x Ø 22.2
Length of housing [mm]	18
Housing diameter [mm]	Ø 28

**SECURITY
MADE IN GERMANY
SINCE 1883**

