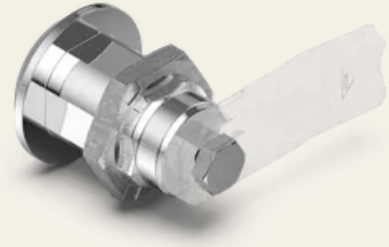


Zamak rotary bolt housing with Ø 32 mm

Article No.: V02962210

The quarter-turn lock housing holds the lock insert and, in combination with the cam, forms the actual quarter-turn lock, which is finally equipped with a cam tailored to the specific application. As with the cams and insert parts, there are various housing diameters available – from more prominent and solid designs to inconspicuous and more delicate models.



Technical specifications

Material	Zinc die
Surface	Powder-coated
Colour	Black
Mounting hole	Ø20.2 mm x Ø22.2 mm
Housing diameter	Ø 32 mm
Length of housing	30 mm
WebGL	https://api.sts.sch-server.de/sync/renderings/02.962.210/webGL/02.962.210.gltf
Installation opening [mm]	Ø 20.2 x Ø 22.2
Housing diameter [mm]	Ø 32
Length of housing [mm]	30

**SECURITY
MADE IN GERMANY
SINCE 1883**

