

## Stainless steel hinge, 3-part

Article No.: V04600500

---

The 3-part stainless steel hinge is the ideal solution for versatile door applications. It is suitable for recessed, flush-mounted and flush doors and can be used on both the right-hand and left-hand versions.



### Properties

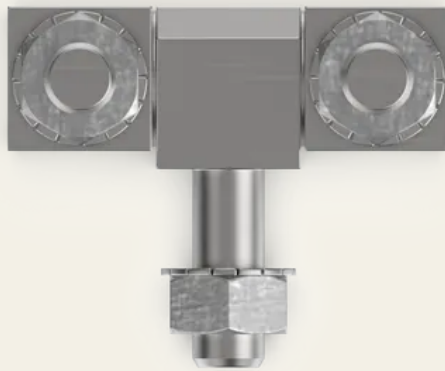
- For surface-mounted, flush and inset doors
- Can be used on right- and left-hand versions
- Opening angle of 180°
- Further sizes and materials available on request
- Long bracket optionally available with or without threaded stud

### Technical data

Material	Stainless steel
Colour	Silver
Dimensions LxWxH	49 x 18 x 18 mm
Installation opening	Ø8.5 mm x 33 mm hole spacing
Door version	Right-hand version / left-hand version
Assembly	With M8 threaded studs
Fixing type	Nut fixing

## Technical data

Adjustability	X-axis
Opening angle	270°
Feature	With fixed pin 80mm
WebGL	<a href="https://api.sts.sch-server.de/sync/renderings/04.600.500/webGL/04.600.500.gltf">https://api.sts.sch-server.de/sync/renderings/04.600.500/webGL/04.600.500.gltf</a>
Dimensions [mm]	49 x 18 x 18
Installation opening [mm]	Ø 8.5 x 33 Hole spacing
door return	Prominent



**SECURITY  
MADE IN GERMANY  
SINCE 1883**

