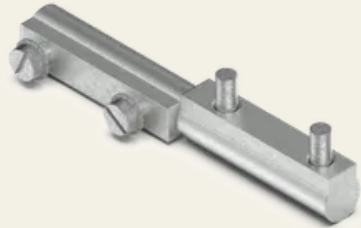


## 95 mm profile hinge

Article No.: V05401410

Profile hinges offer a precise and reliable solution for demanding applications where high stability and durability are required. They are perfect for insert parts in areas that require a high level of security, such as critical infrastructure. The profile hinges ensure smooth and even movement without compromising on security or load-bearing capacity.



### Properties

- For surface-mounted doors
- Can be used in right- and left-hand versions
- Minimalist design
- Other sizes and materials available on request

### Technical data

Material	Steel
Surface	Zinc-plated
Colour	Silver
Dimensions LxWxH	95 x 13 x 13 mm
Door version	Right-hand version / left-hand version
Fixing type	Nut fixing
Adjustability	X-axis

## Technical data

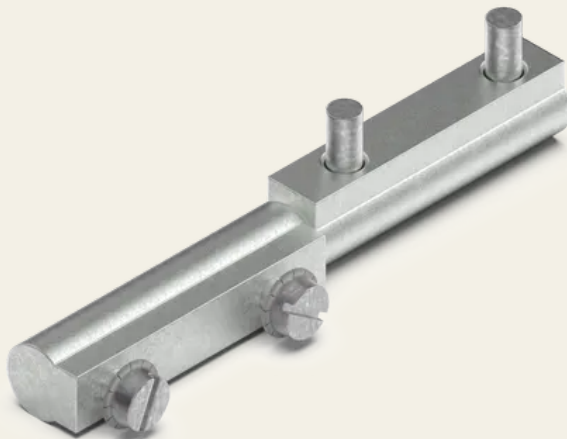
Opening angle 360°

Feature With fixed pin 25.5mm , with stainless steel sleeve

WebGL <https://api.sts.sch-server.de/sync/renderings/05.401.410/webGL/05.401.410.gltf>

Dimensions [mm] 95 x 13 x 13

door return Prominent



**SECURITY  
MADE IN GERMANY  
SINCE 1883**

