

Construction tape, 2-part, steel, blank

Article No.: V15406520

The construction hinges are usually welded to the door construction.



Properties

- Surface: bright steel
- Loose pin

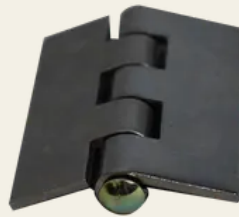
Functional description

These belts are made of bright steel, are available in two-pieces and in various dimensions.

Technical data

Material	Steel
Surface	Blank
Colour	Silver
Dimensions [mm]	75 x 60 x 3 x 6.5

**SECURITY
MADE IN GERMANY
SINCE 1883**



SECURITY
MADE IN GERMANY
SINCE 1883

